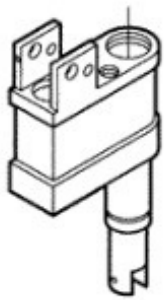
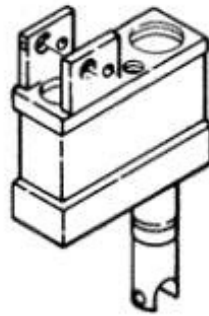


Crown PTH –Hydraulic Units:



PTH Older Version

S/N: #3-118400 to 3-183849
Seal Kit P/N: 41246

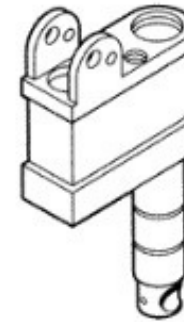


PTH Newer Version

S/N: #3-183850 & higher
Seal Kit P/N: 43023



Crown PTH50 –Hydraulic Units:



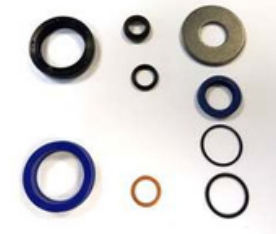
PTH50 Older Version

S/N: Up to #7-512500
Seal Kit P/N: 44648



PTH50 Newer Version

S/N: #7-512501 & higher
Seal Kit P/N: 819934



Crown Pallet Truck Identifier

There are four different **Crown** pallet trucks, two versions of the “**PTH**” model and two versions of the “**PTH50**” model. Each pump unit is shaped slightly differently as shown above & requires it’s own specific seal kit. The best way to tell these models apart is to see if the steer wheel axle fits into a notch (PTH models) or through a hole (PTH50) models. **Struggling to identify your Crown Pallet truck? – Contact us for assistance.**



+44 (0)28 9344 0526



info@bcfhandling.com



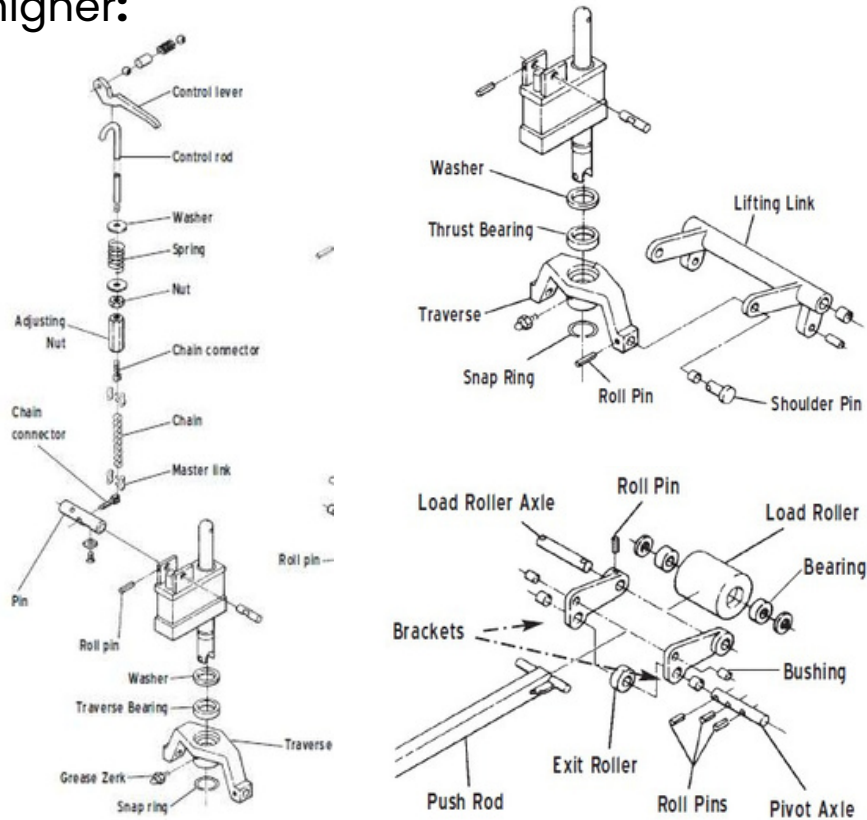
bcfhandling.com



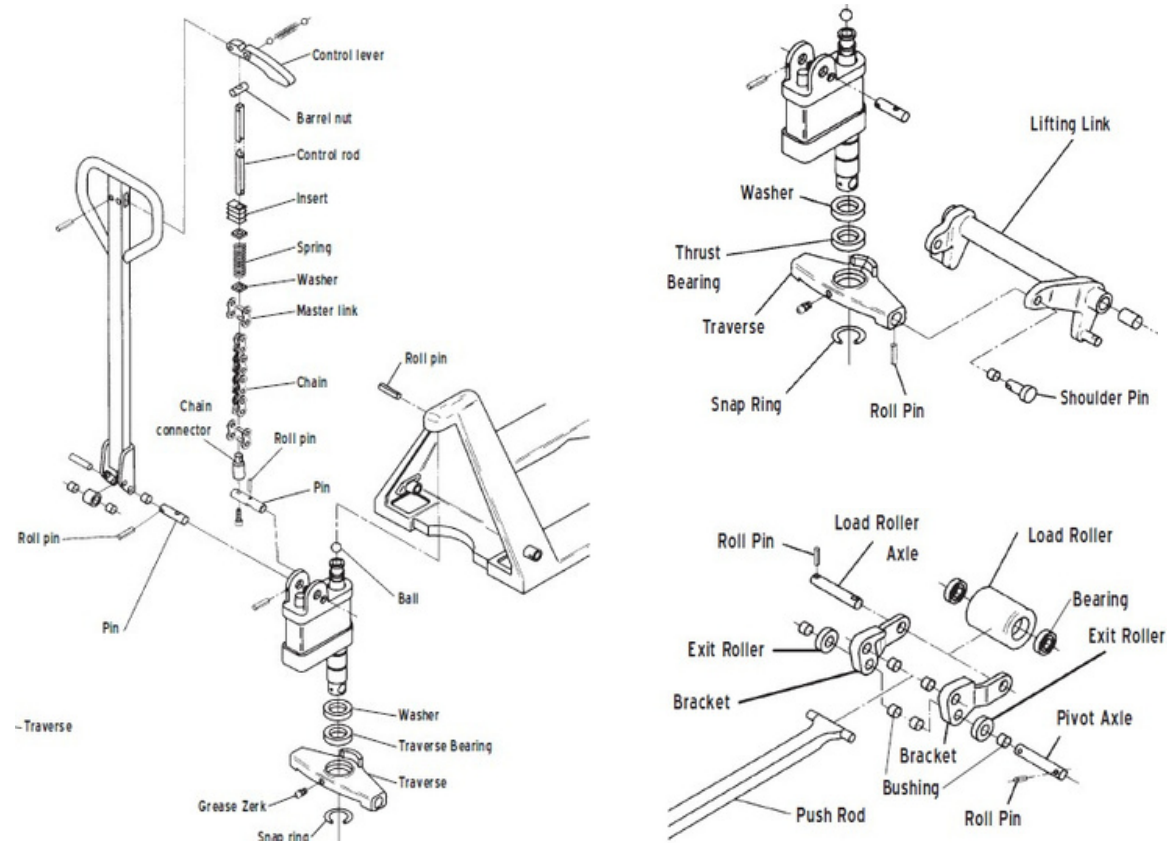
Visit Our Online
Webshop **Now!**

www.bcfhandling.com

Crown PTH -Newer -S/N: #3-183850 & higher:



Crown PTH50 -Older -S/N: Up to #7-512500:



Crown Pallet Truck Identifier

The two most popular **Crown** pallet truck models are the **"PTH -Newer"** & the **"PTH50 -Older"** model.

The PTH-Newer model steer wheel axle fits in to a notch on the bottom of the pump, whereas the PTH50-Older model requires the steer wheel axle to slot in to a hole in the bottom of the pump. Also, note that the Traverse plate on the PTH -Newer model has drop down sides, whereas the PTH50 -Older model does not. And finally, the PTH New pump unit has square handle connector plates and is square around the back of the lift cylinder, whereas the PTH50 -Older has rounded handle connector plates & rounded at the back of the lift cylinder.



+44 (0)28 9344 0526



info@bcfhandling.com



bcfhandling.com



Visit Our Online
Webshop Now!

www.bcfhandling.com